



WILLIAM
DATA SYSTEMS

ZEN SOLUTIONS

ZEN EE MONITOR is a prime component of ZEN, the William Data Systems suite of network management solutions. ZEN provides a comprehensive insight into z/OS network operations by offering targeted solutions, adapted to meet your unique business needs.

The suite consists of the ZEN Presentation Manager, a central interface that enables users to integrate and operate tools easily, and a selection of targeted solutions that provide IT performance management, network optimization, monitoring, automation, tracing, reporting and security. ZEN solutions are critical to maintaining business continuity and service levels of z/OS networks.

Replace NLDM with ZEN Session Awareness (SAW) data

Maintaining network management tools that provide no assistance for managing modern IP-centric networks is a questionable policy in an economic climate where every dollar spent is scrutinized.

Although most IBM mainframe datacenters have implemented IP backbones, SNA traffic, whether native, via TN3270, DLUR/DLSw or increasingly from the 'SNA-over-IP' solution provided by IBM's Enterprise Extender, is still commonplace as are the problems associated with managing large numbers of SNA sessions.

IBM's Network Logical Data Manager (NLDM) is a component of NetView™ that allows users to perform problem determination and response time measurement for SNA sessions. VTAM® Session Awareness (SAW) data provides information about all VTAM sessions and is used by NLDM to report on logical unit (LU) session status, session partners and configuration data.

Why is SAW data still Important?

VTAM commands can provide information about active sessions, but details about failed sessions and the reasons why they failed are not so easy to determine, especially after the event. SAW data provides comprehensive information about session failures, including sense codes.

With very large numbers of these types of sessions still in daily use, their efficient management is obviously important. The ability to retain this information for long-term trend analysis and network consolidation purposes is equally vital.

Old and Blue

NLDM was written in the early 1980's. The amount of historical SAW data NLDM can retain is restricted by the file access methods it uses. Its reliance on legacy VSAM KSDS file access methods is not consistent with best practise today of using VSAM data-in-virtual (DIV) and Dataspace technology. This becomes a problem if there is a need to delete old and unused SNA resources, since it's not possible to look back far enough to determine if a resource is really redundant. Furthermore, these methods compromise its efficiency in terms of MIPS consumed.

You may be faced with having to continue to pay for out-dated software. But with budgets squeezed tighter than ever how do you balance the needs of having to manage "old" SNA network devices with the proliferation of your IP network? How do you justify continuing to pay for out-dated, poorly performing software when what you actually need is a product that caters for old and new network technologies?

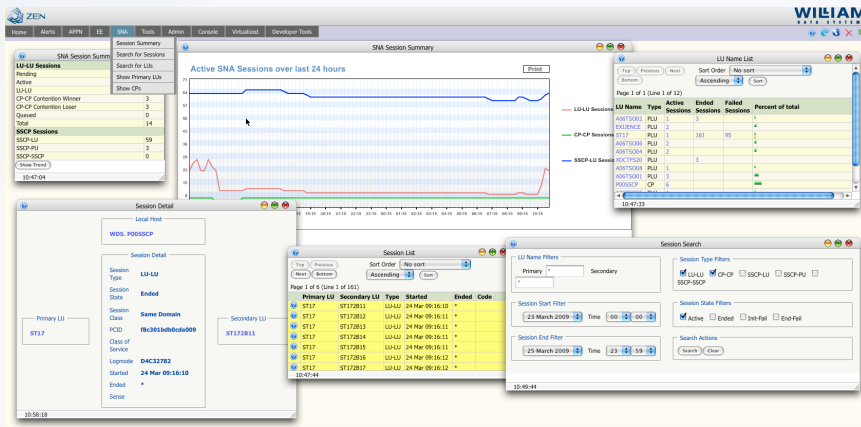
a **syncsort** company

NOW and ZEN

The ZEN EE MONITOR (ZEM) from WDS is a state-of-the-art monitor catering for APPN/HPR and Enterprise Extender networks. ZEM's support for SAW data brings SNA device management into the twenty-first century. Using our innovative and intuitive browser-based user-interface, users can simply and easily interrogate SNA session information.

By utilizing the latest DIV & Dataspace technologies, ZEM removes all the restrictions previously associated with NLDM SAW data management:

- Sophisticated indexing provides for improved speed of search
- Advanced filtering ensures manageable search result size
- Direct access to session failure INIT sense codes via the ZEN Presentation Manager reference data look-up
- Access to up to 20 million connection records
- Improved CPU utilization with memory-to-memory Dataspace technology
- Access to detailed history available via DIV or SMF records
- Simplifies SNA to APPN/HPR or IP migration



Session Awareness data in ZEN EE MONITOR

ZEN EE MONITOR SAW DATA SUPPORT is a best of both worlds solution that allows you to save CPU cycles, save money by replacing existing legacy software and benefit from a state of the art monitor for the 21st century datacenter.

SUPPORT

As confirmed through an independent survey of William Data Systems customers, we have built an exceptional reputation for outstanding customer support. We provide comprehensive, effective and highly responsive support for WDS products at all stages of their lifecycle.

In addition, a wide range of Professional Services and training programs are available dependent on user demand. These can be held at WDS offices, customer sites or managed remotely via web conferencing.

ZEN EE MONITOR - SAW DATA SUPPORT

Save CPU cycles and license fees. Replace legacy tools with state-of-the-art network management.



William Data Systems (WDS) is a pioneer of specialized z/OS network management solutions. Established in 1993, we provide innovative solutions to run mainframe networks efficiently and securely. ZEN, the WDS network management suite, offers a selection of user-friendly and cost-effective solutions to meet your unique needs. To overcome both business and technology challenges, WDS provides customers with licensing and pricing terms that are as flexible as our solutions.

WDS supports customers worldwide in sectors such as finance, banking and manufacturing, and our client list includes Fortune 100 companies and government agencies. WDS is an IBM Business Partner and a member of the IBM PartnerWorld for Developers program. We are committed to the global z/OS networking market and to leading the way with innovative solutions through the latest advances.



To learn more about WDS ZEN solutions, for support or to contact our offices, visit www.willdata.com

IBM logo, the Business Partner emblem, z/OS, VTAM and SNA are trademarks of International Business Machines Corporation. ZEN, the ZEN logo, ZEN IP MONITOR - IMPLEX (ZIM), ZEN EE MONITOR - FERRET (ZEM), ZEN OSA MONITOR (ZOM), ZEN LINUX MONITOR (ZLM), ZEN TRACE & SOLVE - EXIGENCE (ZTS), ZEN FTP CONTROL - FTPALERT (ZFO), ZEN EE SECURITY - APIAS (ZES) and ZEN APPLICATION GATEWAY (ZAG) are trademarks of William Data Systems Ltd. All other brand and product names are trademarks or service marks of their respective holders.

Copyright © 1999-2015 William Data Systems Ltd. All rights reserved.



Authorized System z

a **syncsort** company