



ZEN Cost saving technology from

WILLIAM DATA SYSTEMS

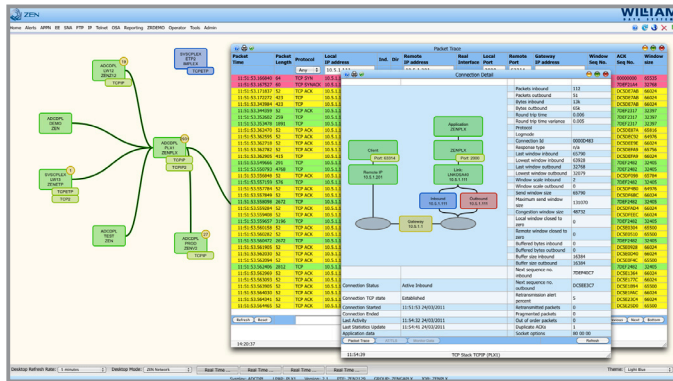
5th July 2011

Latest ZEN IP MONITOR - Not Just A Pretty Interface

ZEN, the cost saving z/OS network management suite from William Data Systems (WDS) continues to evolve with the launch of version 5 of ZEN IP MONITOR. This new release includes many improvements suggested by customers, as well as other enhancements to help busy z/OS network support people do more in less time.

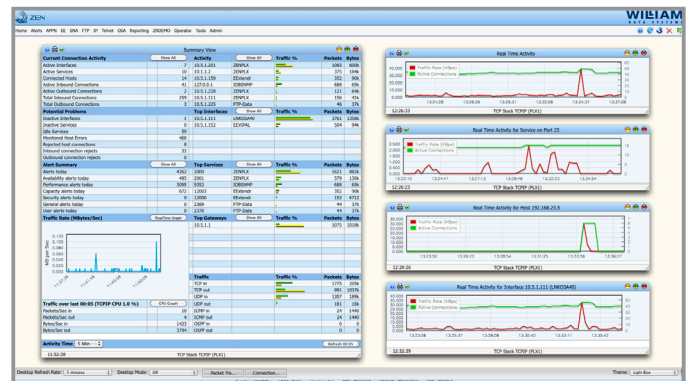
Known to many of its users worldwide by its previous name IMPLEX, ZEN IP MONITOR (ZIM) is part of the ZEN suite of leading edge z/OS network management technology. ZEN is developed by a dynamic research and development operation that keeps System z network managers one step ahead in these challenging times. The latest enhancements to ZIM include:

Integration with ZEN's advanced web-browser presentation means ZIM benefits from imaginative and flexible data presentation that can highlight exactly what is relevant for individual users.



A dynamically changing topological view of the mainframe IP network is displayed in an easy to understand graphical presentation, with lower-level (drill-down) detailed information available by clicking any of the elements in the display. Possible problems are easily spotted as elements automatically change color when alert conditions are detected.

This approach greatly simplifies the job of operators and support personnel who are responsible for ensuring service levels are monitored across a plethora of network systems and devices.



Further ZEN-enablement benefits come in the form of interoperability with other ZEN components. For example, once ZIM has detected an error condition, customers of ZEN's class leading TRACE & SOLVE – EXIGENCE (ZTS) product can start, stop & view ZTS traces, directly from ZIM displays, for deep-dive problem analysis.

However sophisticated the user-interface, no busy frontline support person can be expected to permanently watch the screen. ZIM's intelligent alerting facilities with built-in threshold discovery ensure support personnel are notified immediately a threshold breach or error condition is discovered.



ZEN

Cost saving technology from

WILLIAM
DATA SYSTEMS

5th July 2011

Continued: Latest ZEN IP MONITOR - Not Just A Pretty Interface

In addition to the new user-interface, ZIM v5 has several other enhancements, including:

- Significant new monitoring capabilities for complex Sysplex Distributor environments*
- Improvements and enhancements to the Alerting function
- Enhancements to TN3270 and NTT Monitoring and Displays
- The introduction of a Command Input Area to many of the 3270 panels
- Large Screen Support for 3270 Emulated Panels
- Packet Trace Panel Improvements
- Enhancements to Enterprise Extender Alerting
- Group Delete and Add Service Group Ports by Server

*Available via PTF update July 2011

WDS's Founder, Liam Hammond, explained, "**ZIM v5 delivers faster, more intelligent ways to monitor System z IP networks and presents a more easily understood analysis of the data. Business performance and reputations rely on IP networks that need constant scrutiny with up to date technology. Older tools were not designed to effectively monitor today's IP networks. Our ZEN components deliver scalable, leading edge solutions and real annual cost savings.**"

Read how one of the largest z/OS sites in the world has benefited from utilizing ZEN IP MONITOR - IMPLEX: <http://www.willdata.com/documentation/CustRef.FI.pdf>

About William Data Systems

www.willdata.com

William Data Systems (WDS) is a pioneer of specialized IBM System z™ z/OS® network management solutions. Established in 1993, we are an independent global company that provides innovative solutions to run mainframe networks efficiently and securely. ZEN, the WDS network management suite, offers a selection of user-friendly and cost-effective solutions to meet unique needs. With a proven record of technical innovation, our ideas are often copied but never bettered.

To help customers overcome both business and technology challenges, WDS provides customers with licensing and pricing terms that are as flexible as our solutions. Some of our competitors like to make unsubstantiated and entirely subjective claims that their products are the best in the world. We believe the customer is better placed to decide what's best for their business so we leave the hyperbole to the competition.

WDS supports customers worldwide across all vertical markets and our client list includes Fortune 100 companies and government agencies. WDS is an IBM Business Partner and a member of the IBM PartnerWorld for Developers program. We are committed to the global z/OS networking market and to leading the way with innovative solutions through the latest advances.

Further details from **Graham Storey**, VP Marketing
William Data Systems
Email: graham.storey@willdata.com
Office: 703 674 2200

